



SonicLine – Sonic tips for a vast range of applications.



SonicLine
Sonic tips of
outstanding quality

Interproximal finishing **new**



Quality Products
Made in Germany

Original
Komet
quality.



Sirona® are registered trademarks of the company Sirona.
MULTIflex™ and SONICflex™ are trademarks of the company KaVo. Proxeo®, Synea® and Alegra® are registered trademarks of the company W&H.

Brasseler®, Komet®, CeraBur®, CeraCut®, CeraDrill®, CeraFusion®, CeraPost®, DC1®, DCTherm®, FastFile®, F360®, F6 SkyTaper®, H4MC®, OptiPost®, PolyBur®, PrepMarker®, TissueMaster®, TMC® and TissueMaster Concept® are registered trademarks of Gebr. Brasseler GmbH & Co. KG.

Some of the products and designations mentioned in the text are trademarked, patented or copyrighted. The absence of a special reference or the sign ® should not be interpreted as the absence of legal protection.

This publication is copyrighted. All rights, also with regard to translation, reprint and reproduction (also in the form of extracts) are reserved. No part of this publication may be reproduced or reprocessed using electronic systems in any form or by any means (photocopying, microfilm or other methods) without the written permission of the editor.

Colours and products are subject to alterations.
Printing errors excepted.



SonicLine

4 5	SonicLine
	Prophylaxis
6 7	Scaling
8	Implant prophylaxis
	Periodontology
9	Removal of concretions
10 11	Root planing
12 13	Treatment of furcations
	Conservative dentistry
14 15	Preparation of cavities
16 17	Micro/Bevel
18 19	Stripping/Shaping
20	Work on fissures
	Prosthetic dentistry
21	Veneers
22 23	Interproximal finishing new
24 25	Crown preparation
	Endodontics
26 27	Orthograde endodontics
28 29	Retrograde endodontics
30 31	Activation of rinsing liquids
	Oral surgery
32 33	Surgery
34 35	Lateral sinus lift
36	Work on bones
37	Surgical crown lengthening
38	Sonic hand piece
39 40	Accessories



As the leading manufacturer of dental instruments worldwide, we can offer you a vast range of products. We hereby proudly present our SonicLine, the extensive line of sonic tips made by Komet.

Our constantly growing range of high-quality sonic tips includes tips for prophylaxis, periodontology, implant prophylaxis, preparation of crowns, preparation of cavities, work on fillings, orthodontics, veneers, work on fissures, endodontics and oral surgery. On the next few pages, we would like to give you detailed information on the vast scope of applications.

* When using the tips for surgical indications, make sure to use a sonic hand piece that has been authorized for surgery. These include the Komet SFILM/S and the SONICflex™ hand piece (series 2003) provided by KaVo.

** The sonic hand-pieces Ti-Max, series S970L/KL/SL, made by NSK can only be used in combination with the tips for prophylaxis and periodontal treatments SF1/2/3/4/4L/4R/6/8





Made in Germany, the SonicLine comprises a comprehensive range of high-quality sonic tips that cover a multitude of indications. The instruments of the SonicLine owe their effective cutting power to the fact that they can perform elliptical movements in all directions.

Thanks to their clear labelling, the sonic tips are easy to identify. The order number is laser etched onto each tip. Tips coated with fine grain are provided with a red dot for identification. The sonic tips can be reprocessed in a Miele washer/disinfector by means of a rinse adapter which is part of a validated procedure. Instructions on the reprocessing of sonic tips can be ordered from the manufacturer.

Apart from an ample choice of sonic tips, Komet's SonicLine also comprises a sonic handpiece suitable for every authorized sonic tip – the air scaler SF1LM/S. This scaler is distinguished by its amazing

versatility and impressive performance. For further information on the SF1LM/S, please turn to page 38 of this brochure.

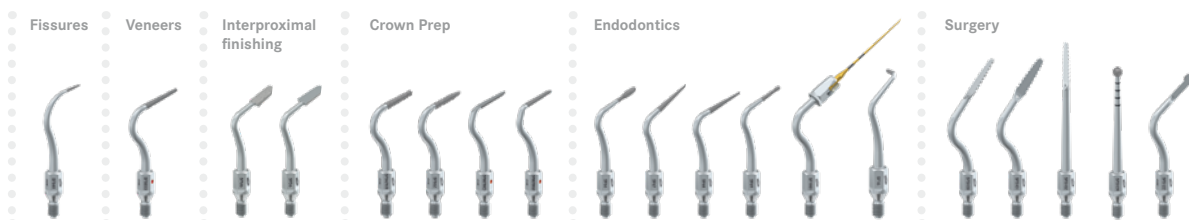
Important notes:

The sonic tips* made by Komet can not only be used in Komet's sonic hand-piece SF1LM/S, but also

- In the Scalers made by the co. W&H (Series Proxeo® ZA-55/L/LM/M/LS and Proxeo® ST ZE-55RM/BC, Series Synea® ZA-55/L/LM/M or series Alegro® ST ZE-55RM/BC), as well as
- In the SONICflex™ hand-piece provided by the company KaVo (Series 2000N/L/X/LX or series 2003N/L/X/LX) or
- In the SIROAIR L of the co. Sirona®.
- In the sonic hand-pieces Ti-Max, series S970L/KL/SL, made by NSK**



Manufacturer's Information
on the reprocessing of sonic tips
(410381)





Scaler

Tips for removing dental calculus | SF1-3, SF6

Indication:

- Supra and subgingival removal of calculus (up to a depth of 2 mm) [1/2]

Advantages:

- Mechanical work is much less tiring than work with manual instruments
- The elliptical movements in all directions performed by the sonic hand piece make circular work as easy as child's play

Recommendations for use in the Komet SF1LM/S:

- Start up sonic tip prior to application to the tooth, providing plenty of spray cooling
- Power setting ① : gentle treatments
- Power setting ② : standard treatments
- Power setting ③ : only for a short period of time



SF1.000



SF2.000



SF6.000



SF3.000



Hint:

For implant prophylaxis, we recommend our sonic tip SF1982 (see page 8).



Scaler

Tips for the removal of calculus | SF8

A reliable tip for dental hygienists. The SF8 can be used for removing concretions in the supragingival and in the subgingival region. It constitutes an ideal connection between the removal of calculus and periodontal scaling during professional cleaning.

Indication:

- Supra and subgingival removal of calculus (up to a depth of 4 mm)

Advantages:

- Gentle, yet precise removal of concretions
- Improved cooling
- Easier rinsing of periodontal pockets
- Suitable for work in pockets with a depth of up to 4 mm [1]

Recommendations for use in the Komet SF1LM/S:

- Start up sonic tip prior to application to the tooth, providing plenty of spray cooling
- Power setting **1** : gentle treatments
- Power setting **2** : standard treatments
- Power setting **3** : only for a short period of time



SF8.000

Implant prophylaxis

Removal of concretions from implant necks | SF1982

Indications:

- Polymer pins for non-abrasive removal of subgingival concretions and soft deposits from smooth implant necks
- Removal of plaque
- Removal of new deposits of calculus

Advantages:

- No abrasion
- No roughening of smooth neck areas
- Easy to handle screwed joint between the holder and the Polymer pin
- The pin is disposable. The holder can be reused, reprocessed and re-sterilised

Recommendations for use in the Komet SF1LM/S:

- Power setting ① : gentle treatments
- Power setting ② : standard treatments



SF1982.000
Polymer-Pin

566.000
Mounting wrench

SF1981.000
Sonic tip holder

Set 4611
10 Polymer pins, 1 holder,
1 mounting wrench 566



Periodontal treatments

Removal of concretions | SF4

Indication:

- Removal of soft plaque in deep periodontal pockets (up to a depth of 9 mm) [1]

Advantages:

- The minimally invasive function of the sonic tips allows gentle work, protecting the adjacent collagenous soft tissue and the root surface
- Improved bacterial management [2]

Recommendations for use in the Komet SF1LM/S:

- Start up sonic tip prior to application to the tooth, providing plenty of spray cooling
- Power setting ① : gentle treatments
- Power setting ② : standard treatments
- Power setting ③ : only for a short period of time



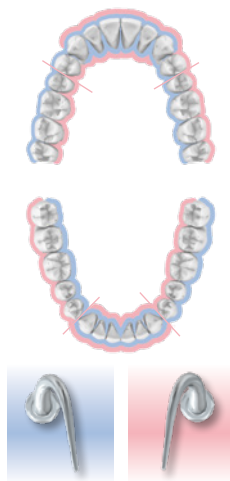
SF4.000



SF4L.000



SF4R.000



SF4L.000

SF4R.000



Hint:

We recommend checking the degree of wear of these tips on a regular basis, with the help of the control card (410652).

Periodontal treatments

Planing of root surfaces | SF10L/R/T

Our sonic tips SF10L/R were developed in close cooperation with Prof. Günay of the Medical University Hanover. Distinguished by its clever design with a rounded tip and sharp-edged inner part, the SF10L/R is ideally suitable for the minimally invasive, particularly effective removal of soft and hard deposits and planing of the root surface. Its rounded tip greatly reduces the risk of injury to the patient and the dentist. The special shape of this new sonic tip is suitable for a range of different tooth anatomies and facilitates thorough cleaning of the root surfaces. The slim, straight shape of the new sonic tip (SF10T) makes it particularly suitable for gentle, yet precise work in deeper gingival pockets (>9 mm) in crowded conditions.

Indication:

- Minimally invasive, particularly effective removal of soft and hard deposits and planing of the root surface whilst reducing the risk of injury to the patient.



SF10L.000



SF10R.000

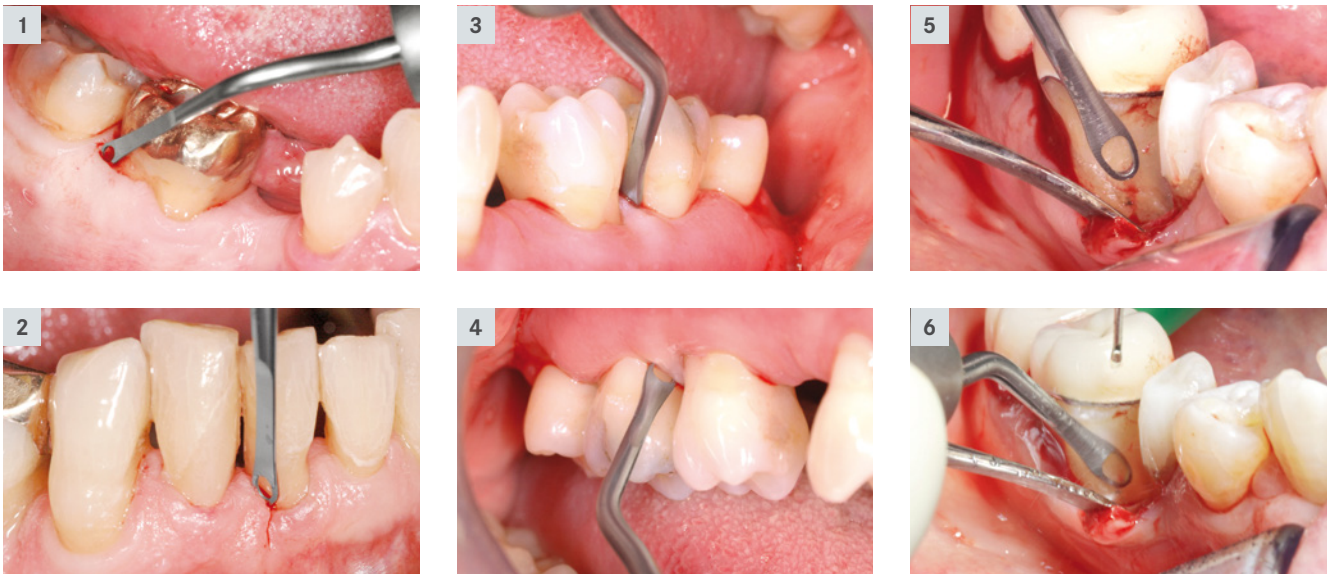


SF10T.000



Scientific advice:
Prof. Günay, Medical University
Hanover/Germany.



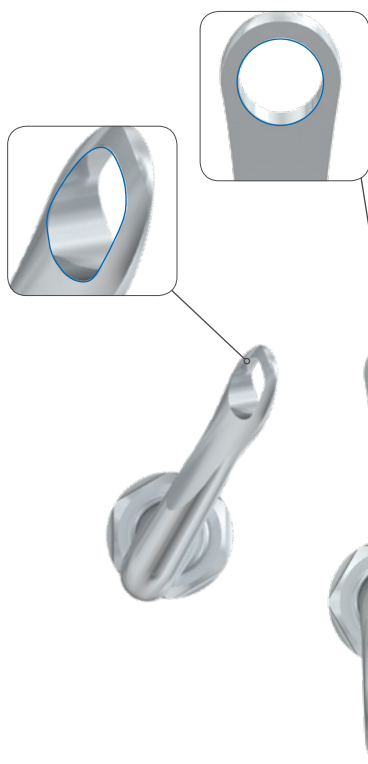


Advantages:

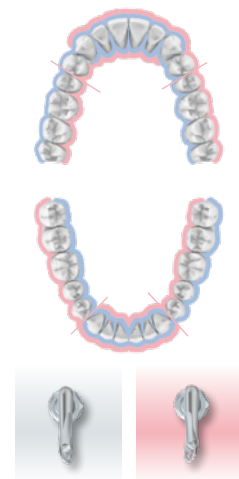
- Gentle, thanks to a rounded tip and effective because the working part is provided with cutting edges on both sides (see image)
- Prevents damage to the soft tissue
- Suitable for treatments with or without the creation of a flap [1 - 6]

Recommendations for use in the Komet SF1LM/S:

- Power setting ① : standard treatments
- Power setting ② : only for a short period of time



The inner surface of the working part is provided with cutting edges on both sides, thus ensuring even substance removal.



SF10L.000

SF10R.000



Periodontal treatments

Treatment of furcations | SF11

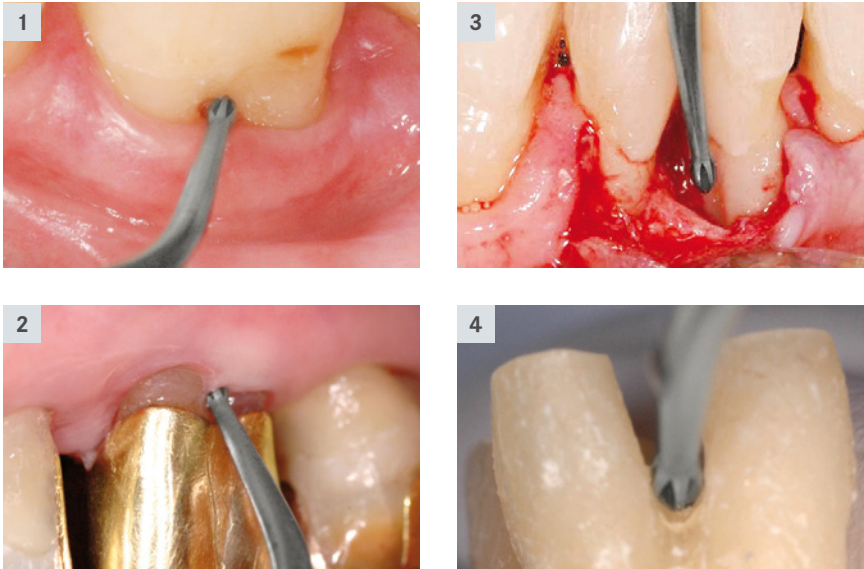
The difficult access and the bizarre structures in the furcation region pose a great challenge to the user. This is why we developed the sonic tip SF11 in close cooperation with Prof. Günay of the Hannover Medical University. Distinguished by its ingenious new shape, this instrument truly revolutionizes the mechanical treatment of furcations. The SF11 can also be used as part of a root treatment without flap which is particularly gentle on the soft tissue to be treated. Provided with 6 blades, this tip is ideally suitable for the effective cleaning even of particularly hard-to-reach furcations. The special shape is suitable for a range of different tooth anatomies.

Indications:

- Minimally invasive, particularly effective removal of soft and hard deposits in hard-to-reach concavities
- Enlarging the entry of the furcation to create optimum hygienic conditions
- Suitable for use during all stages of periodontal furcation treatments: Prevention, therapy and aftercare



Scientific advice:
Prof. Günay, Medical University
Hannover/Germany.



Advantages:

- Six blades for gentle, yet effective substance removal
- Efficient, atraumatic work without damage to the soft tissue
- Suitable for periodontal treatments with and without a flap [1–4]

Recommendations for use in the Komet SF1LM/S:

- Power setting ① : standard treatments



The blades of the instrument ensure uniform substance removal and create smooth surfaces for perfect hygienic conditions.

Hint:

We recommend our compass for periodontal treatments:



Ideally suited for
CAD/CAM techniques

Interproximal cavity preparation

For perfect restoration margins

In close cooperation with Dr. M. Oliver Ahlers, Hamburg, Komet has developed sonic tips for the preparation of interproximal cavities. It was our goal to create new sonic tips to facilitate the final shaping of cavities and the smoothing of the interproximal cavity margins. The result: 4 diamond coated sonic tips bisected lengthways (mesial/distal) that are ideally suited for work on molars and premolars. These tips were developed in line with the preparation guidelines for ceramic restorations, with a view to reducing the technical requirements and facilitating the shaping of the interproximal boxes. Thanks to their rounded angles in the transition area between the axial and the shoulder region,

these sonic tips are capable of preparing the cavities to a perfectly chamfered shape, thus creating ideal conditions for taking a precise impression of the preparation, with either conventional impression material or by means of radiographic techniques. The new sonic tips create perfect conditions for the subsequent work in the dental laboratory. The clear and concise shape of the sonic tips greatly facilitates the creation of precise restorations.

For the preparation of the basic cavity prior to receiving ceramic inlays or partial crowns, we recommend our expert set 4562ST.



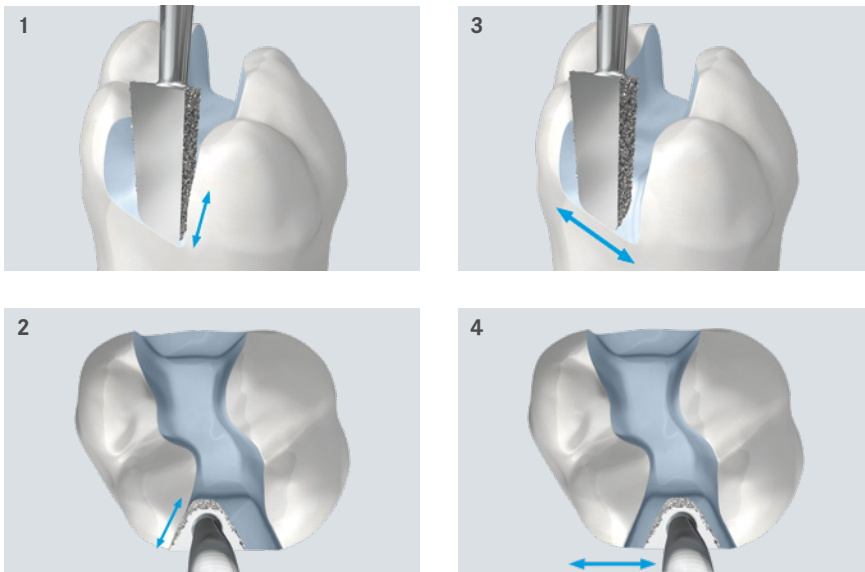
4 arguments in favour of Komet tips:

- ① Optimized diamond coating (60 µm instead of 40 µm) to enable shaping and finishing
- ② The shape of the tips is adapted to today's ceramic inlays (instead of the previously used ceramic inserts). This guarantees plane lateral surfaces and transitions rounded in all directions
- ③ Greater axial depth for improved shaping of the buccal and lingual surfaces of the interproximal box as well as the floor of the box
- ④ The tip is available in 2 sizes each for premolars and molars

Hint:
We recommend our compass for all-ceramic restorations:



4562ST
Expert Set in a sterilizable stainless steel bur block



Indications:

- Final shaping and finishing of interproximal cavities and smoothing of interproximal cavity margins in molars and premolars [1-4]. The following restorations can be used subsequently:
- Direct fillings made of tooth-colored composites
- Inlays/partial crowns made of pressed ceramics or CAD/CAM milled ceramics

Advantages:

- Rounded shapes for the preparation prior to receiving ceramic inlays and composite fillings
- 2 different sizes for work on small and large lateral defects
- The ideal interproximal cavity angle prevents unsupported enamel prisms and creates restoration margins that can be clearly read and scanned

Recommendations for use in the Komet SF1LM/S:

- Start up sonic tip prior to application to the tooth, providing plenty of spray coolin
- Power setting ① : finishing
- Power setting ③ : shaping

For premolars:



SFM7.000.1
mesial



SFD7.000.1
distal



SF1981.000
Holder for Sonic tip

For molars:



SFM7.000.2
mesial



SFD7.000.2
distal



SF12.000
CEM tip

Handy hint:

Designed for the gentle and precise positioning of inlays and partial crowns, the CEM tip SF12 ideally complements these sonic tips.



Video "Preparation rules for ceramic inlays and partial crowns"



Webinar "Preparation techniques and fixation of all-ceramic restorations". Univ.-Prof. Dr. Roland Frankenberger

Micro/Bevel

Sonic tips for micropreparation

In conservative dentistry, top priority is given to the preservation of natural hard tooth substance. The basic concept of minimally invasive dentistry has, therefore, inevitably resulted in new demands on the design of instruments. In addition to our rotary instruments for micropreparation (Sets 4337 and 4384) with specially slender necks and small working parts, Komet now offers a range of sonic tips for the minimally invasive treatment of incipient caries. Treatment of caries with conventional instruments poses a risk of eliminating too much tooth substance, particularly in the interproximal region where damage to the sound substance of adjacent teeth often cannot be prevented.

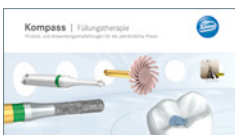
This is where the micro tips come into play. Their small, delicate working parts were specially designed for the preparation of tiny and hard-to-reach lesions. The user can choose between a small (size 016) and big (size 024) hemisphere. The tips are suitable for both occlusal and lateral access to the cavity.

The Bevel tips are intended for beveling the margins with precision to an angle of 45°.

Available in mesial and distal versions, all tips are coated on one side only to prevent damage to the adjacent tooth. For a precise minimally invasive treatment of tiny defects, we recommend using magnifying glasses or microscopes.



Hint:
We recommend our compass
for filling therapy:





Indications

- Defect orientated preparation of micro lesions without damaging the adjacent teeth with SF30D/M (available with a small [1] or big [2] hemisphere)
- Beveling of cavity margins with SF58D/M [3]

Advantages:

- Coated on one side only to prevent damage to the adjacent teeth
- Thanks to the oscillating movements and minimally invasive preparation, these tips are very popular in children’s dentistry
- Precise beveling of the cavity margins to optimize the quality of the restoration [3]

Recommendations for use in the Komet SF1LM/S:

- Start up sonic tip prior to application to the tooth, providing plenty of spray cooling
- Power setting ① : gentle treatments

Micro tips:



SF30M.000.016
mesial



SF30D.000.016
distal



SF30M.000.024
mesial



SF30D.000.024
distal

Bevel tips:



SF58M.000.027
mesial



SF58D.000.027
distal



Set 4337.314
for micropreparation as suggested by Dr. Stefan Neumeyer*

* also available with FG short shank 313



Set 4383
for minimally restoration as suggested by Dr. Stefan Neumeyer

Stripping | Shaping



Thin sonic tips for interproximal surfaces

In close collaboration with Dr. Ivo Agabiti, we developed very thin sonic tips covered in fine grain which are designed for trimming interproximal surfaces.

Indications:

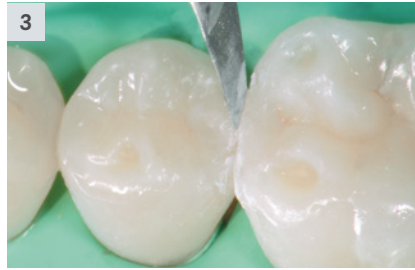
- Separation prior to the preparation of crown cores
- Smoothing of sharp transitions at the interproximal preparation limit as part of the preparation of cavities [1/2]
- Anatomical shaping of the interproximal surfaces of composite fillings [3/4]
- Interproximal enamel reductions (IER) as part of orthodontic treatments [5/6]

Advantages:

- The tips are covered on one side only (“M” for mesial and “D” for distal surfaces). This allows the neighbouring teeth to remain untouched.
- Choice of flat (for stripping) and convex tips (for shaping)



Scientific advice:
Dr. Ivo Agabiti, Pesaro/Italy



Stripping
Coating on flat side

- **SFD1F.000**
60° | distal
- **SFM1F.000**
60° | mesial
- **SFD3F.000**
15° | distal
- **SFM3F.000**
15° | mesial

Shaping
Coating on convex side

- **SFD2F.000**
60° | distal
- **SFM2F.000**
60° | mesial

Recommendations for use in the Komet SF1LM/S:

- Start up sonic tip prior to application to the tooth, providing plenty of spray cooling
- Power setting 1 : gentle treatments



Video "Crown preparation"
Dr. Agabiti



Video "Preparation of cavities"
Dr. Agabiti



Video "IER"
Dr. Agabiti



Opening of fissures

Indications:

Minimally invasive opening of fissures [1/2], for example in the following situations:

- Detection of hidden caries
- Removal of fissure caries
- Preparation for fissure sealing

Advantage:

The relatively low oscillation amplitude and the small diameter of the instrument allow minimally invasive work.

Recommendations for use in the Komet SF1LM/S:

- Start up sonic tip prior to application to the tooth, providing plenty of spray cooling.
- Power setting ① : Gentle opening of fissures
- Power setting ② : standard treatments
- Power setting ③ : only for a short period of time



SF849.000.009



Veneers

SF8850

Sonic tips for veneers, developed by Dr. Schwenk and Dr. Striegel, Nuremberg

Indication:

Finishing of the veneers [3] after preparation with rotary instruments of identical shape.

Advantage:

The combination of fine grit and a low oscillation amplitude results in the creation of a very fine surface [1], which is an indispensable precondition for a tight prosthetic margin [2].

Recommendations for use in the Komet SF1LM/S:

- First prepare the veneers with rotary instruments the usual way:
- Shaping with the instrument 6850.314.016
- Finishing with the instrument 8850.314.016
- Fine trimming, especially of the edges, with the fine grain sonic tip SF8850
- Start up sonic tip prior to application to the tooth, providing plenty of spray cooling
- Power setting ① : Fine trimming of surfaces



Scientific advice:
Dr. Thomas Schwenk
Dr. Marcus Striegel



Hint:
The sonic tips SF8878KD/KM from page 24 are also suitable for the preparation of veneers

Interproximal finishing ^{new}

For perfect interproximal surfaces

In close collaboration with private lecturer Dr. Oliver Ahlers, Hamburg, and Prof. Dr. Daniel Edelhoff, Munich, we have developed sonic tips for smoothing and finishing interproximal surfaces. The user can choose between 2 sonic tips with working parts that are bisected lengthwise (mesial and distal). When preparing the interproximal region, the aim is to create even and straight surfaces and prevent damage to the adjacent tooth.

This is, however, difficult to achieve with traditional rotary instruments. To allow space-saving work, the rotary instruments used for this purpose are usually thin but these instruments tend to create slightly wavy surfaces.

This is where the sonic tips SFM6 and SFD6 come into play. After eliminating the interproximal contact point with rotary instruments, these new sonic tips are used to create straight and even surfaces.

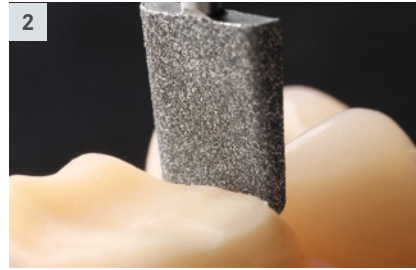
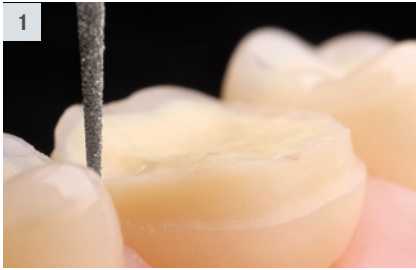


Occlusal onlay brochure
© 418600



Set 4665 ST
Occlusal onlay set
in a sterilizable stainless steel tray

Handy hint:
These tips ideally complement the occlusal onlay set 4665ST. For further information, see our occlusal onlay brochure.



Indications:

- Use as part of interproximal crown preparations and minimally invasive preparation for occlusal onlays
- Smoothing and finishing of interproximal surfaces [2] after separation with a traditional rotary instrument (e.g. 858.314.010) [1].

Advantages:

- Thanks to their special design (wider than rotary separating instruments in size 010), these tips can create smooth interproximal surfaces easier than for example the finishing instrument 8858.314.010
- The tips are only coated on one side to prevent damage to the adjacent tooth

Recommendations for use in the Komet SF1LM/S:

- Start up sonic tip prior to make contact with the tooth, providing plenty of spray cooling
- Power setting ① : Finishing
- Power setting ③ : Shaping



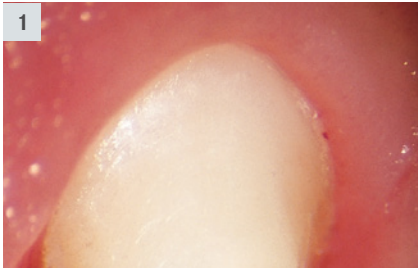
SFM6.000
mesial



SFD6.000
distal

Handy hint:

We recommend our sonic tips SFM7 and SFD7 (pages 14, 15) for the preparation of interproximal ceramic inlays



Preparation of crowns

The perfect complement to rotary instruments

According to Dr. Domenico Massironi, the “best synergy effects are created by a combination of rotary and sonic instruments”. We have implemented Dr. Massironi’s concept by jointly developing special sonic tips for the preparation of crowns.

In close cooperation with Prof. Günay of the Medical University of Hanover, we created the sonic tips SF8878K and SF8856 as well as special tips with working parts that are bisected lengthwise for both mesial and distal use. These tips ideally complement the set 4384A.

Medium grit:



SF979.000.012, 014, 016



SF878K.000.018



SF856.000.018



SF862.000.014



SF847KR.000.016

Fine grit:



● SF8979.000.014, 016



● SF8878K.000.018



● SF8856.000.018

Bisected lengthwise:



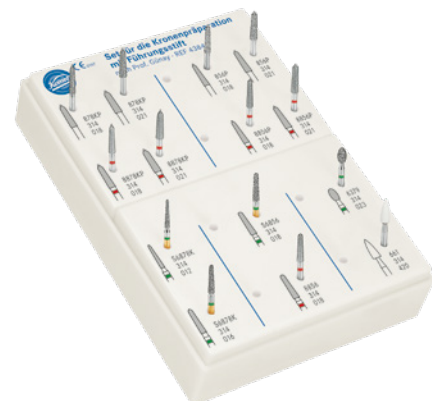
● SF8878KD.000.018
distal



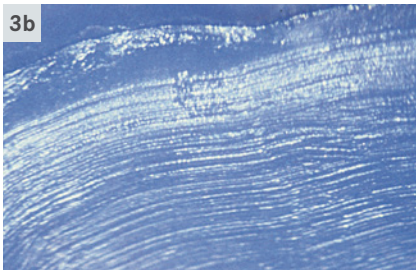
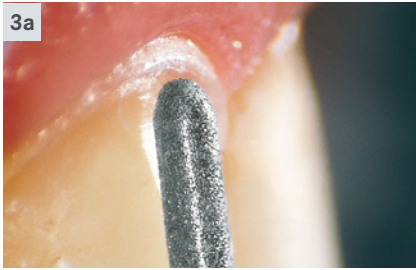
● SF8878KM.000.018
mesial



Scientific advice:
Dr. Domenico Massironi, Milan/Italy
Prof. Günay, Medical University of Hanover/Germany



Set 4384A
for crown core preparation with instruments with guide pin,
developed by Prof. Günay



Indications:

- Exact positioning and finishing of the prosthetic margin [4 a/b] after supragingival preparation with rotary instruments of identical shape [3 a/b]
- Interproximal trimming by means of sonic tips bisected lengthwise (mesial or distal)

Advantages:

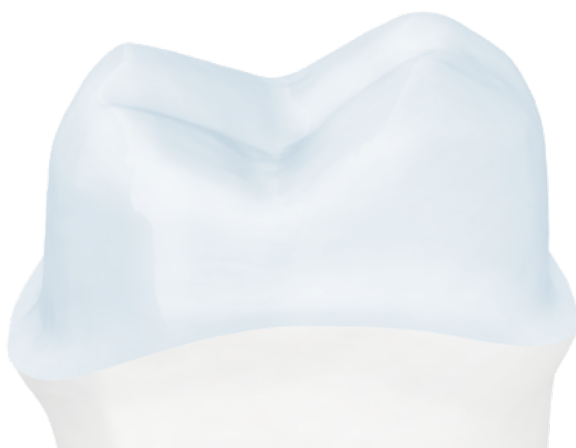
- The tips are gentle on the soft tissue, thus avoiding haemorrhages that might hamper impression taking
- The retraction cord is not pulled out
- The tips create very fine crown margins, which is an essential condition for well-fitting, durable restorations [1/2]
- Improved adhesion of the fixing cement thanks to the irregular structure of the crown core

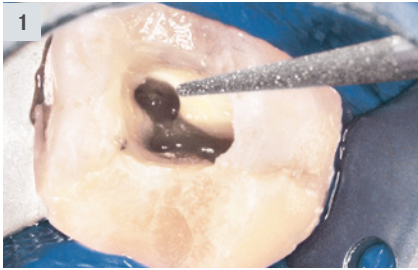
Recommendations for use in the Komet SF1LM/S:

- First prepare tooth with rotary instruments of matching shape
- Start up sonic tip prior to application to the tooth, providing plenty of spray cooling
- Power setting ① : Positioning and finishing of the crown margin



Video „Preparation of crown cores“
Dr. Massironi





Endodontics

Orthograde endodontics

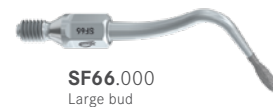
Indications:

Orthograde preparation of the pulp chamber and preparation of the cervical third of the root canal as part of an endodontic treatment.

- SF66: Initial preparation of the access cavity, removal of protruding material
- SF69: Finishing of the access cavity and minimal freshening of the dentin layer, removal of residues of root canal fillings
- SF67: Retrieval of fine and calcified canals, opening of the upper canal portions during revision. During preparations instead of Gates-Glidden burs [1]
- SF68: Alternative to the SF67 with a more pronounced angle
- SF70: Enlargement of long and wide canals, unblocking of fractured instruments, removal of root fillings made of gutta-percha and soft cements

Advantages:

- Quick preparation and removal of old root fillings
- Easier retrieval of root canals
- Enlargement of obliterated canals
- Preparation of straight canal access cavities without weakening the crown
- Useful for removing hard root filling material, cements or posts
- Controlled, gentle preparation without steps and protruding material
- Excellent vision





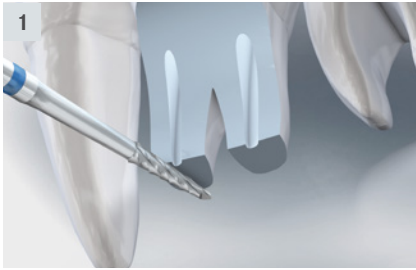
Recommendations for use in the Komet SF1LM/S:

- First prepare tooth with rotary instruments the usual way
- Start up sonic tip prior to application to the tooth, providing plenty of spray cooling
- Power setting ① : Finishing of surfaces and fine trimming
- Power setting ② : Removal of large amounts of substance

Hint:

For endodontic treatments, we recommend our comprehensive endodontic range





Endodontics

Retrograde endodontics

Indications:

Retrograde preparation of the root canal during apicectomies. After gaining access through the jaw bone, the preparation of a bone window and the resection of the root apex [1], the following sonic tips are used:

SF56/SF57: Retrieval of the root canals from an apical direction [2].

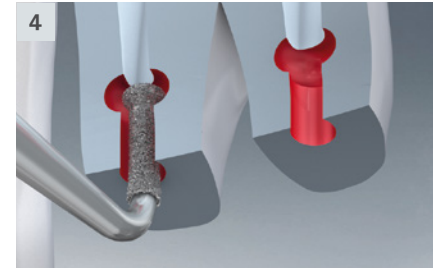
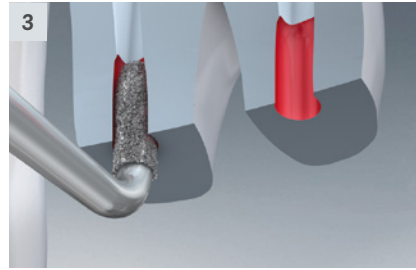
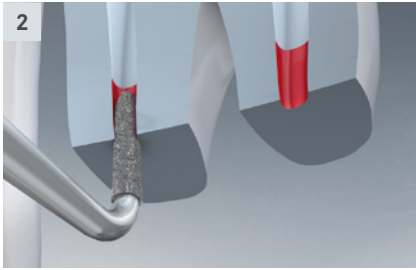
SF16/SF17: Preparation of the cavity up to a penetration depth of 3 mm [3].

SF55: In case of extremely curved roots in the front region, it may be helpful to open and enlarge the canal with these specially shaped tips.

SF20/SF21: Preparation of an undercut to ensure that the retrograde root filling is retained [4].

Advantages:

- Minimally invasive treatment without need to prepare a large bone window
- Axial work, even in very crowded conditions
- Easier work thanks to double-angled tips
- Slender tips for excellent vision in all jaw regions
- Simplified preparation of undercuts for permanent retention of the retrograde root filling



SF56.000
torpedo, curved to the left



SF57.000
torpedo, curved to the right



SF16.000
torpedo, curved to the left



SF17.000
torpedo, curved to the right



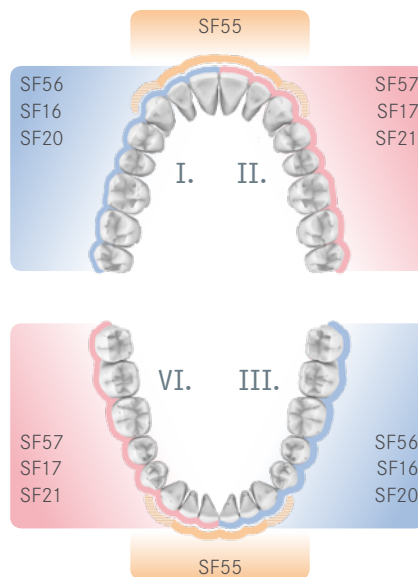
SF55.000
torpedo, extremely curved



SF20.000
t-shaped, curved to the left



SF21.000
t-shaped, curved to the right



Recommendations for use in the Komet SF1LM/S:

- Start up sonic tip prior to application to the tooth, providing plenty of sterile spray cooling
- External supply of a sterile cooling agent by means of the cooling adapter SF1979 (the water supply of the dental power unit must be turned off)
- Use power setting 1 only

Endodontics

Activation of rinsing liquids

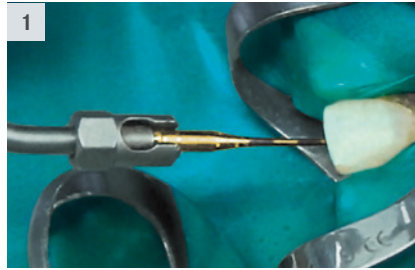
Indication:

Activation of rinsing liquids during endodontic treatments [1]. Thanks to sound activated movements and micro currents, the efficiency of rinsing liquids inside the root canal is greatly increased. Any bacteria, residues of pulp tissue, loose dentin chips and the smear layer are safely removed [2].

Advantages:

- More efficient rinsing of the root canal
- Made of highly flexible nickel titanium, with a titanium-nitride surface coating
- Small instrument diameter for rinsing narrow root canals
- The same instrument diameter for all canals, thus eliminating the need to change the instrument
- Safe end and absence of toothings to avoid inadvertent removal of substance from the canal wall
- Laser marks to indicate the depth





Recommendations for use in the Komet SF1LM/S:

- First, treat the root canal in the usual manner by means of an established preparation system (e.g. F6 SkyTaper, F360 or R6 ReziFlow)
- Rinse according to an existing rinsing protocol which can be enhanced by a sound activated preparation procedure
- Do not activate the rinsing tip prior to insertion, i.e. do not start up the tip until it has been inserted in the canal
- Use power setting **1** only
- Work with gentle up and down movements



SF65.000.020
Sonic tip for activating rinsing liquids



587.000
Clamping nut
for sonic tip holder SF1981



SF1981.000
Sonic tip holder

Set 4615
5 Sonic tips SF65, 1 tip holder,
1 clamping nut

Surgery

Extremely fine bone cuts

Sonic tips for oral surgery,
developed by Dr. Ivo Agabiti

Indications:

Conservative work on bones as part of
surgical and implantological interventions.

Dr. Agabiti invented these tips with an
elongated yet slightly round outer contour
which is perfectly suited for this purpose.

The teeth of the saw are arranged in
spaces of 1 mm.

- Bone cuts [1 a/b] [2 a/b]
- Splitting of the alveolar crest [1 a/b]
- Detaching a tooth from its alveolar
compartment and extraction
[2 a/b] [3 a/b]



SFS 100.000
sagittal



SFS 101.000
axial

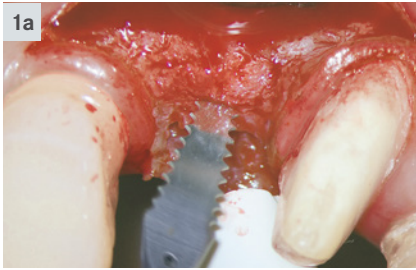


SFS 102.000
gerade



Scientific advice:
Dr. Ivo Agabiti, Pesaro/Italy
www.sonosurgery.it

Note:
Cutting width 0.25 mm
Cutting depth 10.70 mm




Advantages:

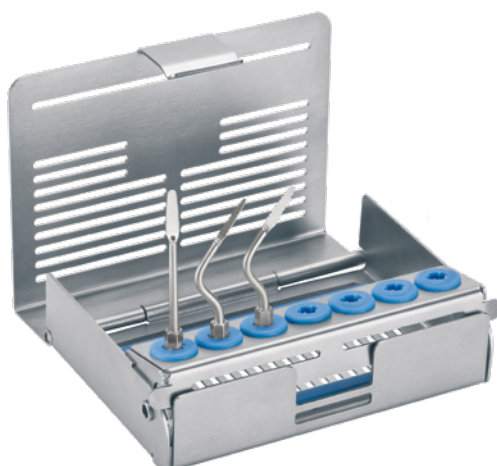
- Perfect shape
- Very fine incisions (0.25mm)
- Gentle on the soft tissue
- Easy handling
- Excellent vision
- Optimum control during operations

Recommendations for use in the Komet SF1LM/S:

- Power setting ② : standard
- Power setting ③ : short-term use
- External supply of a sterile cooling agent by means of the cooling adapter SF1979 (the water supply of the dental power unit must be turned off)



Video 
Dr. Ivo Agabiti



4567A

Sonosurgery set
Can be sterilised at up to 135°C



Lateral sinus lift

SFS109 | SFS103 - 105

Developed by Dr. Ivo Agabiti, these sonic tips are designed for the minimally invasive mobilization of the periosteal membrane in the maxillary sinus as part of a sinus lift.

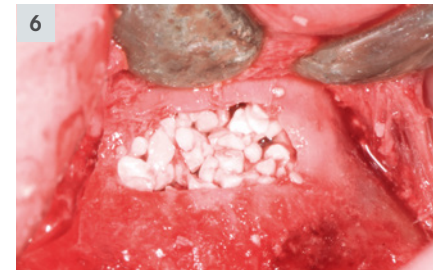
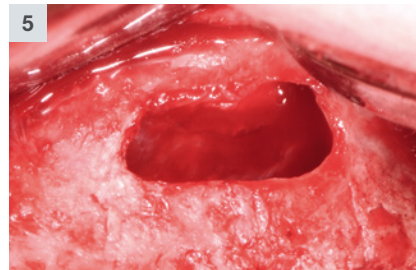
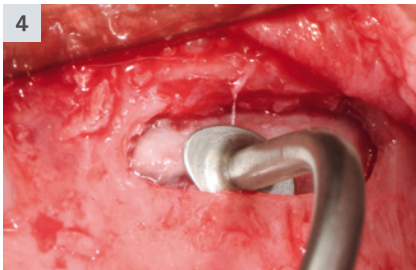
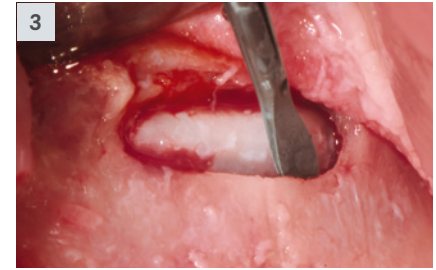
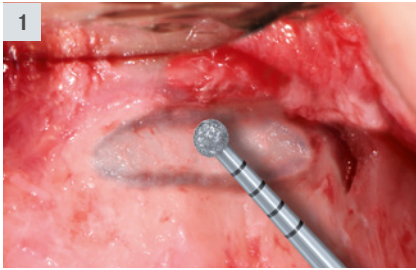
Indications:

- Gentle preparation of a lateral bone window
- Gentle separation of the sinus membrane in the region of the bone window
- Gentle elevation of the sinus membrane



Scientific advice:
Dr. Ivo Agabiti, Pesaro/Italy
www.sonosurgery.it





Advantages:

- The oscillating movements of these sonic tips allow a particularly gentle preparation of the bone window and displacement of the sinus membrane in the area of the previously mobilised lateral bone window
- The saucer shaped sonic tips SFS103 or SFS104 are particularly suited for an optimum elevation of the sinus membrane at the edges of the lateral window

Recommendations for use in the Komet SF1LM/S:

- Power setting ① : gentle
- Power setting ② : standard
- External supply of a sterile cooling agent by means of the cooling adapter SF1979 (the water supply of the dental power unit must be turned off)



Video
Dr. Ivo Agabiti



SFS109.000.025
Diamond coated, round, medium grain



SFS103.000
Saucer Ø 2.5 mm, 75° angle



● **SFS109F.000.025**
Diamond coated, round, fine grain



SFS104.000
Saucer Ø 2.5 mm, 35° angle



SFS105.000
Oval ("elephant foot"),
approx. 3.5 x 5.2 mm, 60° angle

Work on bones

SFS110

Diamond coated sonic tip for vertical incisions in the bone at the mesial and distal end during the widening of the alveolar ridge

Recommendations for use in the Komet SF1LM/S:

- Power setting ① : gentle
- Power setting ② : standard
- External supply of a sterile cooling agent by means of the cooling adapter SF1979 (the water supply of the dental power unit must be turned off)



SFS110.000
Diamond coated, tapered
Ø 1.5 mm, L = 10 mm



Hint:
We recommend our
brochure:

**Chirurgie
Surgery**
© 410102



Surgical crown lengthening

SFS120 - 122

Sonic tips for minimally invasive surgical crown lengthening without the creation of a flap, developed by Dr. Schwenk and Dr. Striegel, Nuremberg



SFS120.000.020



SFS120.000.030



SFS121.000.020



SFS121.000.030



SFS122.000.020



SFS122.000.030

Indications:

- Minimally invasive surgical crown lengthening without creation of a flap, achieved by gently swivelling the sonic tip in mesial and distal direction in order to reconstitute the biological width in the following cases:
- Asymmetrical dental arcade [1]
- Gummy smile [2]
- Violation of the biological width [3]

Advantages:

- Surgical crown lengthening without the creation of a flap
- Reconstitution of the biological width without need for periodontal surgery [4]
- Thanks to their shape which resembles a flattened sphere, these tips are ideally suited for effective reduction of the bone
- Diamond coated on the outer edges only
- Excellent healing of the wound, almost trauma-free treatment
- Minimally invasive technique

Recommendations for use in the Komet SF1LM/S:

- Power setting ① : gentle
- Power setting ② : standard



Scientific advice:
Dr. Thomas Schwenk
Dr. Marcus Striegel



Video
Dr. Thomas Schwenk
Dr. Marcus Striegel



Sonic Hand Piece

SF1LM/S

Sonic hand piece by Komet

The air driven sonic hand piece (air scaler) SF1LM/S is extremely effective, yet very gentle. It is distinguished by its elliptical movements of 360°. What's more, the SF1LM/S has the following advantages:

- Fits all MULTIflex™ connections (SF1LM) and Sirona® connections (SF1LS)
- Optimum illumination of the operative site thanks to two focused light beams
- Infinitely variable (3 settings)
Power setting ① = gentle
Power setting ② = standard
Power setting ③ = short-term use only*
- Safety lock at setting 2
- Oscillating frequency of 6 kHz
- With spray cooling
- 2 years' manufacturer warranty

Important note:

Apply low contact pressure only; excessive contact pressure reduces the vibration of the sonic tip and consequently its effectiveness.



Indikation/Indication	Power Level SF1LM/S		
	1	2	3
Scaler	①	②	③
Implantatprophylaxe/Implant prophylaxis	①	②	●
Paro/Perio*	①	②	③
Kronenpräp./Crown Prep, Stripping/Shaping	①	●	●
Bearbeitung von Approximalfächchen/ Work on interprox. surfaces (SFM/D6, SFM/D7)	①	●	③
Veneertechnik/Veneer Technique, Micro/Bevel	①	●	●
Fissurenbearbeitung/Opening of Fissures	①	②	③
Endo*	①	②	●
Chirurgie*/Surgery*	①	②	●

*Achtung: Bei vereinzelt Instrumenten dieser Indikation gibt es Einschränkungen der Leistungsstufen. Bitte die korrekte Leistungsstufe der Gebrauchsanweisung entnehmen.
 *Caution: In some cases, the instruments intended for this indication cannot be used at all power settings. Please refer to the instructions for use for the correct setting.

● erlaubt/permited
 ● nur kurzfristig erlaubt/permited for a short time only
 ● nicht erlaubt/not permitted

50888 AMS - © 08/2017 - 410652V6 - www.kometdental.de

Test card for prophylaxis and periodontal tips, with a useful overview of the power settings on the reverse: 410652

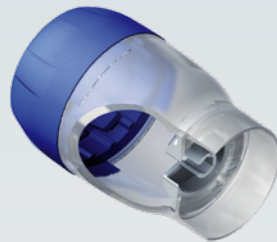
* This level is not authorised for all sonic tips. For further information, please refer to the instructions for use of the tips.



Accessories



9993L6
Sterilization container for 3 sonic tips
and 6 FG and RA instruments



SF1975
Tip changer with torque



9953
Silicone plug for 9952/9993L6

9952
Sterilisation container for 7
sonic tips (without instruments)



9981
Lux coupling with 4 holes

Suitable for all air-driven instruments (turbine, sonic hand-piece etc.) with KaVo MULTiflex™ connection.



SF1978L
Rinse adapter for
sonic tips

(to be reprocessed in Miele washers/disinfectors)



9982
Spare bulb for
XENON technology
for 9981



9983
O-ring
for 9981



9984
O-ring
for 9981

Accessories



Set 4602

Cooling adapter SF1979 for external supply of a sterile cooling agent with mounting wrench 566

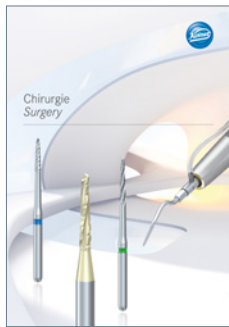
SF1977L

Rinse adapter for reprocessing the cooling adapter SF1979 in a Miele washer/disinfector

Important note:

External supply of a sterile cooling agent by means of the cooling adapter SF1979 (the water supply of the dental power unit must be turned off)

Hint:
We recommend the following brochures:



Chirurgie
Surgery
☎ 410102



Endodontie
Endodontics
☎ 418166



Occlusal onlay brochure
☎ 418600



Manufacturer's information
Sonic tips
☎ 410381



Kompass
Prophylaxis
☎ 417244



Kompass
Sonic and ultrasonic tips
for periodontal treatments
☎ 418175



Kompass
All-ceramic restorations
☎ 412124



Kompass
Periodontology
☎ 417238



Kompass
Filling therapy
☎ 417124



Komet Dental

Gebr. Brasseler GmbH & Co. KG

Trophagener Weg 25 · 32657 Lemgo

Postfach 160 · 32631 Lemgo · Germany

Verkauf Deutschland:

Telefon +49 (0) 5261 701-700

Telefax +49 (0) 5261 701-289

info@kometdental.de

www.kometdental.de

Export:

Telefon +49 (0) 5261 701-0

Telefax +49 (0) 5261 701-329

export@kometdental.de

www.kometdental.de

Komet Austria Handelsagentur GmbH

Hellbrunner Straße 15

5020 Salzburg · Austria

Telefon +43 (0) 662 829-434

Telefax +43 (0) 662 829-435

info@kometdental.at

www.kometdental.at

